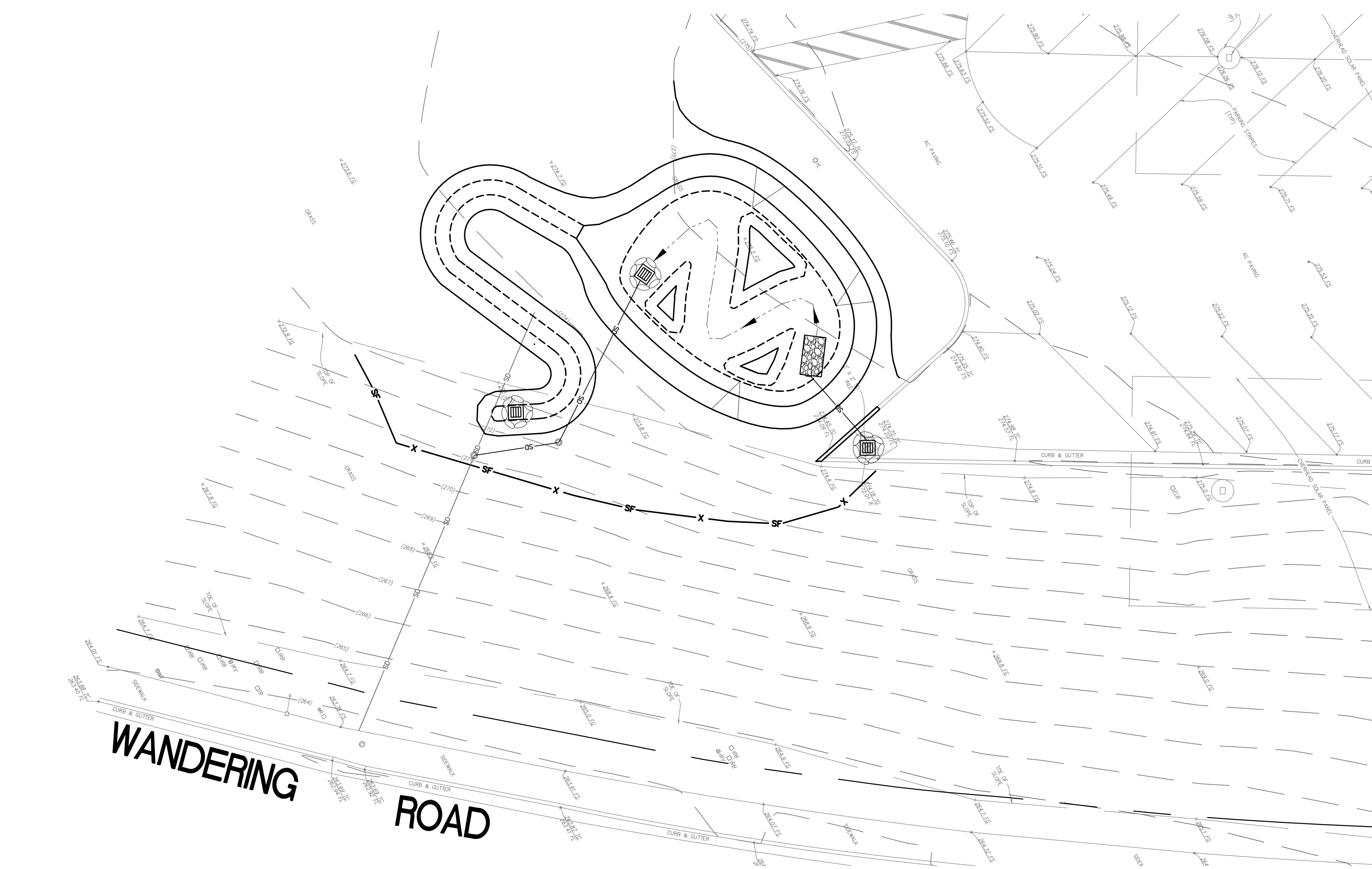


GRADING AND DRAINAGE PLAN
SCALE: 1"=10'



TEMPORARY EROSION AND SEDIMENT CONTROL PLAN
SCALE: 1"=10'

GRADING AND DRAINAGE NOTES:

- ① 24"x24" CATCH BASIN WITH KRI-STAR CATCH BASIN INSERT PER DETAIL A, SHEET C2.0
- ② STORM DRAIN CLEANOUT AND WATER QUALITY SAMPLING PORT TO GRADE PER DETAIL B, SHEET C2.0
- ③ RESTORE EXISTING CONCRETE CURB AND AC PAVING IN KIND AFTER STORM DRAIN INSTALLATION
- ④ REPLACE GRATE ON EXISTING 24"x24" CATCH BASIN WITH NEW 24" CATCH BASIN
- ⑤ CONNECT TO EXISTING STORM DRAIN
- ⑥ 2'LENGTHx2'WIDEx6"THICK RIP RAP PAD.

CIVIL LEGEND

EXISTING CONDITIONS		DESCRIPTION
S	SYMBOL	EXISTING SEWER
W	SYMBOL	EXISTING WATER
G	SYMBOL	EXISTING GAS
E	SYMBOL	EXISTING ELECTRICAL
---	SYMBOL	EXISTING EDGE OF PAVEMENT
100	SYMBOL	EXISTING CONTOUR
x100	SYMBOL	EXISTING ELEVATION
---	SYMBOL	EXISTING FENCE
---	SYMBOL	RIGHT-OF-WAY LINE
---	SYMBOL	PROPERTY LINE
---	SYMBOL	EXISTING EASEMENT
PROPOSED CONSTRUCTION		DESCRIPTION
1.5%	SYMBOL	SLOPE DIRECTION
SD	SYMBOL	HOPE STORM DRAIN (ADS N-12 OR APPROVED EQUAL)
■	SYMBOL	24"x24" PRECAST CATCH BASIN WITH KRI-STAR FILTER INSERT
■	SYMBOL	2'X2' ROCK PAD
○	SYMBOL	STORM DRAIN CLEANOUT/SAMPLING PORT
---	SYMBOL	AC SAWCUT
SDRS G-1	SYMBOL	6" HIGH CONCRETE CURB WITH 18" WIDE CURB CUTS AT 10' O.C.
○	SYMBOL	RELOCATED WOOD FENCE
---	SYMBOL	MATCH EXISTING
100	SYMBOL	5' CONTOUR
101	SYMBOL	1' CONTOUR
100.00	SYMBOL	SPOT ELEVATION
SF	SYMBOL	SEE NOTES
IP	SYMBOL	SEE NOTES

CIVIL WORK TO BE DONE:

UNLESS OTHERWISE NOTED ON THE PLANS, ALL WORK SHALL CONFORM WITH THE FOLLOWING STANDARD SPECIFICATIONS AND DRAWINGS:

- STANDARD SPECIFICATIONS:
1. STANDARD SPECIFICATIONS FOR PUBLIC WORKS CONSTRUCTION AND SPECIAL PROVISIONS, LATEST EDITION.
 2. CALIFORNIA DEPARTMENT OF TRANSPORTATION, "MANUAL OF TRAFFIC CONTROLS FOR CONSTRUCTION AND MAINTENANCE WORK ZONES," LATEST EDITION.
 3. CALIFORNIA STORMWATER QUALITY ASSOCIATION (CASQA), STORMWATER BEST MANAGEMENT PRACTICE HANDBOOK-CONSTRUCTION, LATEST EDITION.
 4. CALIFORNIA MANUAL OF UNIFORM TRAFFIC CONTROL DEVICES (MUTCO), LATEST EDITION.

UTILITY NOTES

1. THE LOCATIONS OF UNDERGROUND UTILITIES AS SHOWN HEREON ARE BASED ON VISUAL OBSERVATION OF ABOVE GROUND STRUCTURES AND RECORD DRAWINGS PROVIDED BY THE OWNER. LOCATIONS OF UNDERGROUND UTILITIES/STRUCTURES MAY VARY FROM LOCATIONS SHOWN HEREON. ADDITIONAL BURIED UTILITIES/STRUCTURES MAY BE ENCOUNTERED. NO EXCAVATIONS WERE MADE DURING THE PROGRESS OF THIS SURVEY TO LOCATE BURIED UTILITIES/STRUCTURES. THE CONTRACTOR SHALL LOCATE ALL EXISTING UTILITIES PRIOR TO BEGINNING WORK.

GENERAL NOTES

1. PROTECT ALL EXISTING UTILITIES UNLESS OTHERWISE NOTED PER PLAN.
2. REPLACE PAVING OVER NEW UTILITY TRENCHES TO MATCH EXISTING WHERE OCCURS
3. NOTIFY ENGINEER OF RECORD IMMEDIATELY IF FIELD LOCATION OR DEPTH OF EXISTING UTILITIES DIFFER SIGNIFICANTLY FROM PLAN.

MINIMUM POST-CONSTRUCTION MAINTENANCE PLAN

AT THE COMPLETION OF THE WORK SHOWN, THE FOLLOWING PLAN SHALL BE FOLLOWED TO ENSURE WATER QUALITY CONTROL IS MAINTAINED FOR THE LIFE OF THE PROJECT:

1. STABILIZATION: ALL PLANTED SLOPES AND OTHER VEGETATED AREAS SHALL BE INSPECTED PRIOR TO OCTOBER 1 OF EACH YEAR AND AFTER MAJOR RAINFALL EVENTS (MORE THAN 1/2 INCH) AND REPAIRED AND REPLANTED AS NEEDED UNTIL A NOTICE OF TERMINATION (NOT) IS FILED.
2. STRUCTURAL PRACTICES: DESILTING BASINS, DIVERSION DITCHES, DOWNDRAINS, INLETS, OUTLET PROTECTION MEASURES, AND OTHER PERMANENT WATER QUALITY AND SEDIMENT AND EROSION CONTROLS SHALL BE INSPECTED PRIOR TO OCTOBER 1ST OF EACH YEAR AND AFTER MAJOR RAINFALL EVENTS (MORE THAN 1/2 INCH). REPAIRS AND REPLACEMENTS SHALL BE MADE AS NEEDED AND RECORDED IN THE MAINTENANCE LOG IN PERPETUITY.
3. OPERATION AND MAINTENANCE, FUNDING: POST-CONSTRUCTION MANAGEMENT MEASURES ARE THE RESPONSIBILITY OF THE CONTRACTOR UNTIL THE TRANSFER OF RESPECTIVE SITE TO THE SCHOOL DISTRICT. AT THAT TIME, THE DISTRICT SHALL ASSUME RESPONSIBILITY FOR THEIR RESPECTIVE PORTIONS OF THE DEVELOPMENT.

EROSION AND SEDIMENT CONTROL

CONSTRUCTION NOTES:

- 11 PLACE SILT FENCE (SE-1) ALONG PERIMETER OF THE PROJECT VICINITY, BOTTOM OF SLOPES
- 12 PROVIDE STREET SWEEPING (SE-7) ANYWHERE SEDIMENT IS TRACKED IN PARKING LOT OR FROM PROJECT SITE
- 13 PROVIDE TEMPORARY GEOTEXTILE FILTER FABRIC INLET PROTECTION (SE-10) BENEATH GRATE FOR CATCH BASINS AND AREA DRAINS
- 14 INFILTRATION AREA - DO NOT COMPACT. FLAG AND FENCE LIMITS. AVOID VEHICLES AND HEAVY EQUIPMENT OVER INFILTRATION AREA AND WITHIN 10'. PROVIDE 4" HIGHLY VISIBLE FENCING AT PERIMETER
- 15 SUGGESTED SAMPLE LOCATION FOR TEMPORARY SEDIMENT TESTING DURING CONSTRUCTION ONLY

Job:		Drawn:	CAR	Checked:	DVC	Date:	OCTOBER 31, 2016
Resubmits:							
IWC-AE WEBB-CLEFF ARCHITECTURE & PLANNING, INC. 5511 Center Blvd., Ste. 111, Encinitas, California 92024 Telephone: (760)754-8800 Fax: (760)452-7541							
Architect FLORA VISTA ELEMENTARY 1690 WANDERING ROAD, ENCINITAS, CA 92024 ENCINITAS UNIFIED SCHOOL DISTRICT							
STORM DRAINAGE BEST MANAGEMENT PRACTICES PLAN							
IDENTIFICATION STAMP DIV. OF THE STATE ARCHITECT OFFICE OF REGULATION SERVICES A# _____ AC _____ FLS _____ SS _____ DATE _____ DIVISION OF THE STATE ARCHITECT Job:							
C1.0							